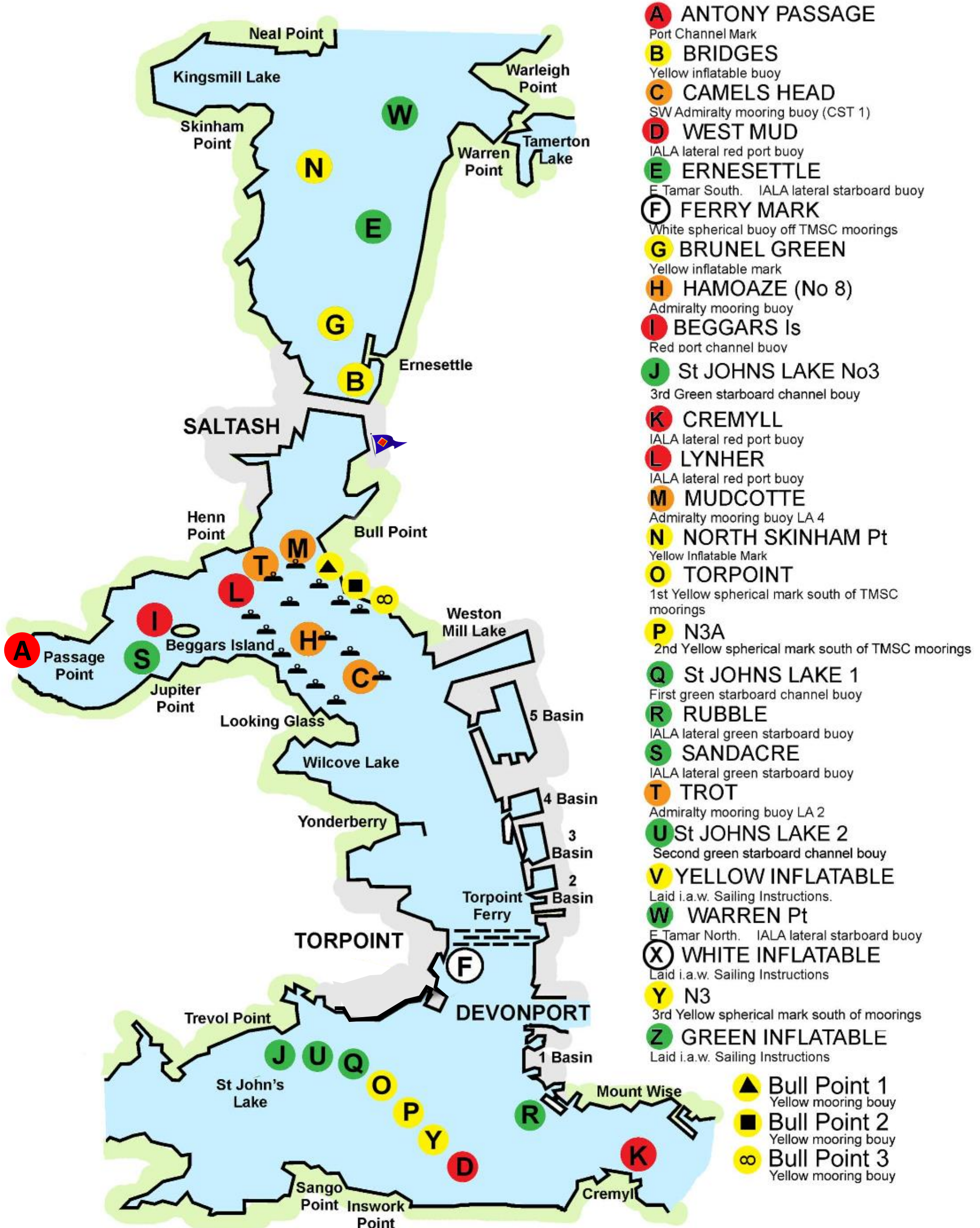




# Tamar River Sailing Club

## Race Marks 2017



- A** ANTONY PASSAGE  
Port Channel Mark
- B** BRIDGES  
Yellow inflatable buoy
- C** CAMELS HEAD  
SW Admiralty mooring buoy (CST 1)
- D** WEST MUD  
IALA lateral red port buoy
- E** ERNESETTLE  
E Tamar South. IALA lateral starboard buoy
- F** FERRY MARK  
White spherical buoy off TMSC moorings
- G** BRUNEL GREEN  
Yellow inflatable mark
- H** HAMOAZE (No 8)  
Admiralty mooring buoy
- I** BEGGARS IS  
Red port channel buoy
- J** St JOHNS LAKE No3  
3rd Green starboard channel buoy
- K** CREMYLL  
IALA lateral red port buoy
- L** LYNHER  
IALA lateral red port buoy
- M** MUDCOTTE  
Admiralty mooring buoy LA 4
- N** NORTH SKINHAM Pt  
Yellow Inflatable Mark
- O** TORPOINT  
1st Yellow spherical mark south of TMSC moorings
- P** N3A  
2nd Yellow spherical mark south of TMSC moorings
- Q** St JOHNS LAKE 1  
First green starboard channel buoy
- R** RUBBLE  
IALA lateral green starboard buoy
- S** SANDACRE  
IALA lateral green starboard buoy
- T** TROT  
Admiralty mooring buoy LA 2
- U** St JOHNS LAKE 2  
Second green starboard channel buoy
- V** YELLOW INFLATABLE  
Laid i.a.w. Sailing Instructions.
- W** WARREN Pt  
E Tamar North. IALA lateral starboard buoy
- X** WHITE INFLATABLE  
Laid i.a.w. Sailing Instructions
- Y** N3  
3rd Yellow spherical mark south of moorings
- Z** GREEN INFLATABLE  
Laid i.a.w. Sailing Instructions
- ▲** Bull Point 1  
Yellow mooring buoy
- Bull Point 2  
Yellow mooring buoy
- ∞** Bull Point 3  
Yellow mooring buoy